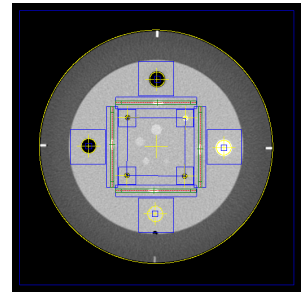


Catphan 500 Alignment Slice

Image Information

CONTENT_DATETIME: 13/08/2008 15:48:07
DEVICE_SERIAL_NUMBER:
FILE_NAME: Catphan500.dcm
KVP: 120
MANUFACTURERS_MODEL_NAME: LightSpeed Pro 32
PATIENT_ID: phy12345
PATIENTS_NAME: physics CATPHAN
X-RAY_TUBE_CURRENT: 400
Z_POS: 1.25



Phantom Alignment

	Width (mm)	Height (mm)	COM - X (mm)	COM - Y (mm)
Phantom Edge Detection	202.15	202.15	-0.57	-0.75

Geometric Linearity

	Distance (Physical)
Distance 1-2	49.88
Distance 2-3	50.09
Distance 3-4	50.01
Distance 4-1	49.94
Average	49.98
Std Dev	0.08 (0.2%)

Sensitometry

Object	Analysis	Expected Result	Result	Test Result
Acrylic	Mean Value		113.84	
Acrylic	Standard Deviation		4.45	
LDPE	Mean Value		-98.64	
LDPE	Standard Deviation		4.37	
Air	Mean Value	Within range -1010,-990	-973.33	FAIL
Air	Standard Deviation		3.77	
Teflon	Mean Value		923.63	
Teflon	Standard Deviation		6.18	

Ramps

	Slice Thickness	Z Slice Position
Ramp Analysis 1	2.40	0.46
Ramp Analysis 2	2.43	0.60
Ramp Analysis 3	2.38	1.23
Ramp Analysis 4	2.37	1.34
Average	2.40	0.91
Std Dev	0.02 (1.0%)	0.38 (42.2%)